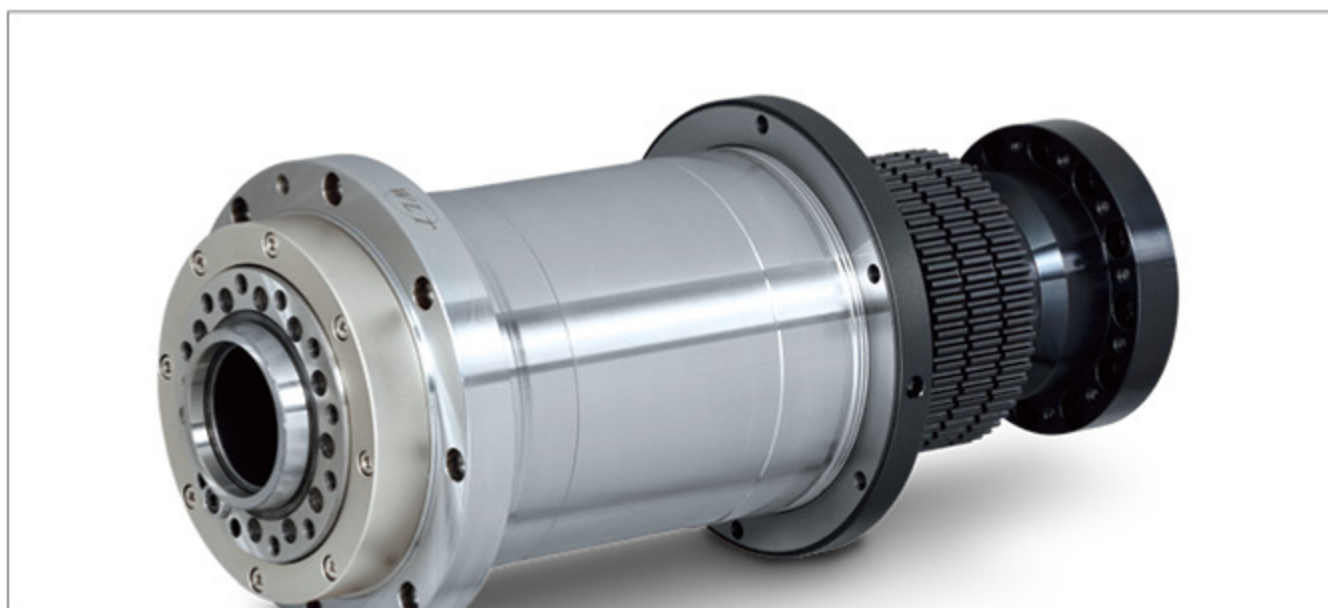


# Spindle for Lathe



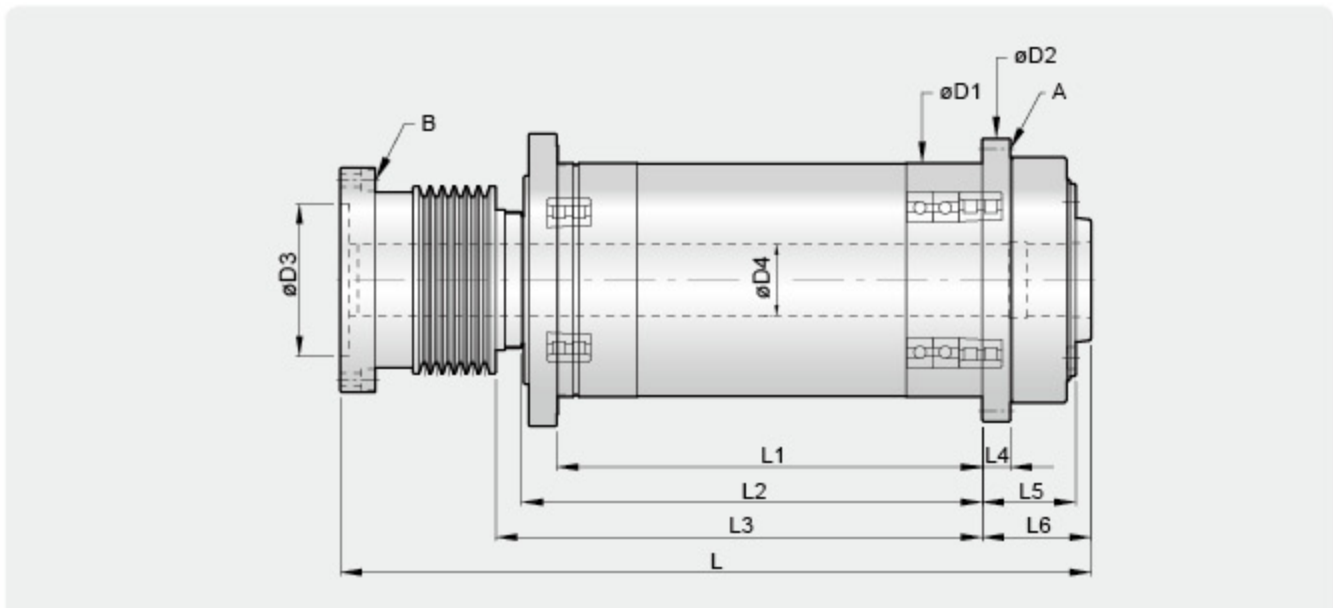
## Specifications of Spindle for Lathe

Model	Speed (rpm)	I.D. of Front Bearing	Front Bearing Type	Rear Bearing Type	Spindle Nose Running Accuracy	Spindle Nose Taper	Lubrication	Dynamic Balance	Temp. Growth
<b>Spindle Specification : A2-4</b>									
LC0480V	6,000-8,000	ø70	70 x 2	70 x 2	3 μm	1/20	Grease	G1	15°C
<b>SPINDLE SPECIFICATION : A2-5</b>									
CT205E	6,000	ø80	70 x 3	70 x 2	3 μm	1/20	Grease	G1	15°C
MY205B	5,000-6,000	ø90	70 x 3	NN x 1	3 μm	1/20-	Grease	G1	15°C
WB0560IC	6,000	ø90	70 x 3	NN x 1	3 μm	1/20-	Grease	G1	15°C
<b>SPINDLE SPECIFICATION : A2-6</b>									
WL0642A	4,200	ø100	NN x 1 Thrust x2	NN x 1	3 μm	1/20	Grease	G1	15°C
WL0642AL *	4,200	ø100	NN x 1 Thrust x2	NN x 1	3 μm	1/20	Grease	G1	15°C
TF0640A	4,000	ø110	NN x 1 Thrust x2	NN x 1	3 μm	1/20-	Grease	G1	15°C
<b>SPINDLE SPECIFICATION : A2-8</b>									
WL0830AL	3,000	ø130	NN x 1 Thrust x2	NN x 1	5 μm	1/20	Grease	G1	15°C
<b>SPINDLE SPECIFICATION : A2-11</b>									
TL1125A	2,500	ø170	NN x 1 Thrust x2	NN x 1	5 μm	1/20	Grease	G1	15°C
<b>SPINDLE SPECIFICATION : A2-15</b>									
WL1510A	1,000	ø240	NN x 1 Thrust x2	NN x 1	10 μm	1/20	Grease	G1	15°C

NOTE\* : The difference between model WL0642A and WL0642AL is overall length.

\* Design and specifications are subject to change without prior notice. For ordering, please contact our business department.

## ■ Dimensional Drawing of Spindle for Lathe



**Dimensional and Specification of Spindle for Lathe**

UNIT: mm

Model	øD1	øD2	øD3	øD4	L	L1	L2	L3	L4	L5	L6	A	B
<b>SPINDLE SPECIFICATION : A2-4</b>													
LC0480V	ø150	ø190	ø100	ø45	454.1	245 (241.5~245)	272	282	25	69	80.1	8-M8 PCD 170	6-M10 PCD 115
<b>SPINDLE SPECIFICATION : A2-5</b>													
CT205E	ø170	ø220	ø100	ø56	557	279(261~279)	352	369	26	74	87	6-M12 PCD 195	6-M10 PCD 130
MY205B	ø180	ø220	ø100	ø56	495.5	265(260~265)	307	325	15	20.5	33.5	7-M8 PCD 200	12-M10 PCD 130
WB0560IC	ø276	ø325	---	ø56	627.5	356	---	---	35	90	103	12-M12 PCD 298	11-M8 PCD 258
<b>SPINDLE SPECIFICATION : A2-6</b>													
WL0642A	ø200	ø242	ø130	ø67	600	266(253~266)	291	355	25	80	93	8-M8 PCD 224	6-M10 PCD 170
WL0642AL *	ø200	ø242	ø130	ø61	642	363(350~363)	394	416	24	80	93	8-M8 PCD 224	6-M10 PCD 170
TF0640A	ø200	ø242	ø160	ø79	561	266(256~266)	297	312	25	80	93	8-M8 PCD 224	6-M10 PCD 190
<b>SPINDLE SPECIFICATION : A2-8</b>													
WL0830AL	ø260	ø300	ø160	ø90	779	360(350~360)	404.5	460	30	81	97	12-M8 PCD 280	6-M10 PCD 190
<b>SPINDLE SPECIFICATION : A2-11</b>													
TL1125A	ø315	ø376	ø230	ø131	825	450(448~450)	522	548	30	71	90	8-M12 PCD 341	6-M16 PCD 275
<b>SPINDLE SPECIFICATION : A2-15</b>													
WL1510A	ø400	ø460	---	ø184	979	545(535~545)	642	663	34	101	120	12-M12 PCD435	-----

NOTE\* : The difference between model WL0642A and WL0642AL is overall length.

\* Design and specifications are subject to change without prior notice. For ordering, please contact our business department.

**WAY LONG TECHNOLOGY CO., LTD.**

No.23-20, Longxing Ln., Sec. 2, Fengxing Rd., Tanzi Dist.,  
Taichung City 427, Taiwan

Tel : 886-4-2539 0238

Fax: 886-4-2539 0112

Email: waylong.spindle@msa.hinet.net

Http://www.wlt-tw.com